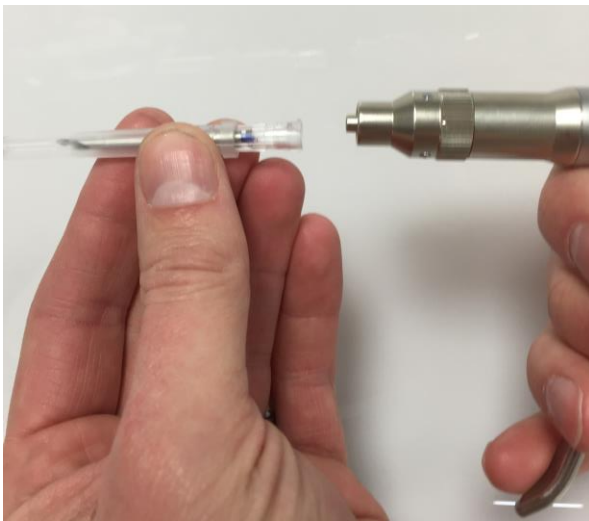


Instructions for the use of the UPGI-SS Stainless Steel Microchip Injector



1. Insert the female luer lock transponder into the male luer lock of the transponder injector.



2. Remove the cap and adjust the orientation of the bevel while turning the adjusting screw.



3. Hold the handle of the injector in a comfortable position like above.



4. To set the transponder, place the needle in the animal at least 1cm and slowly squeeze the lever while maintain a fixed position. Close entry with tissue glue if needed.